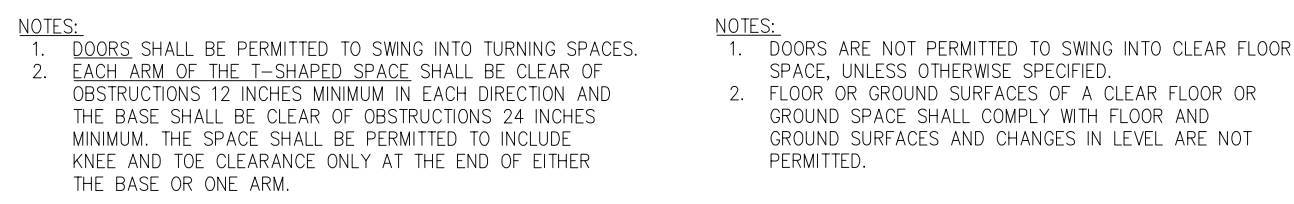
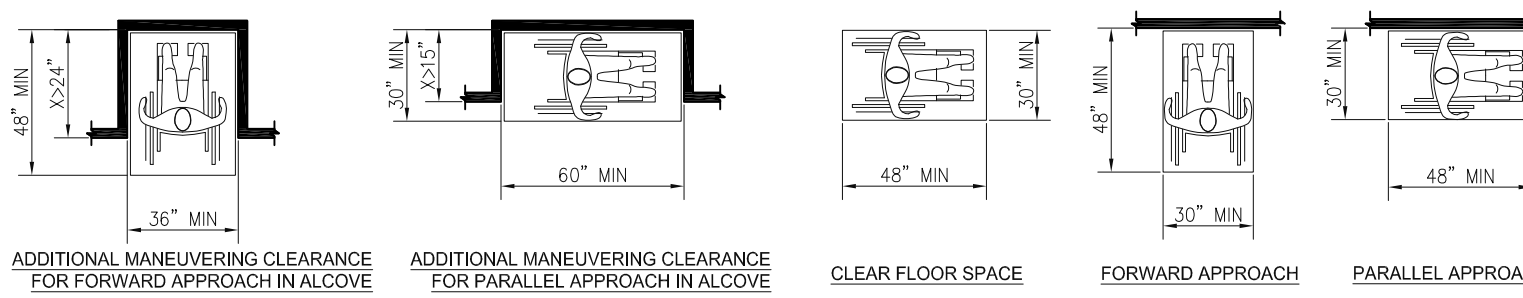


TURNING SPACE/CLEAR FLOOR OR GROUND SPACE

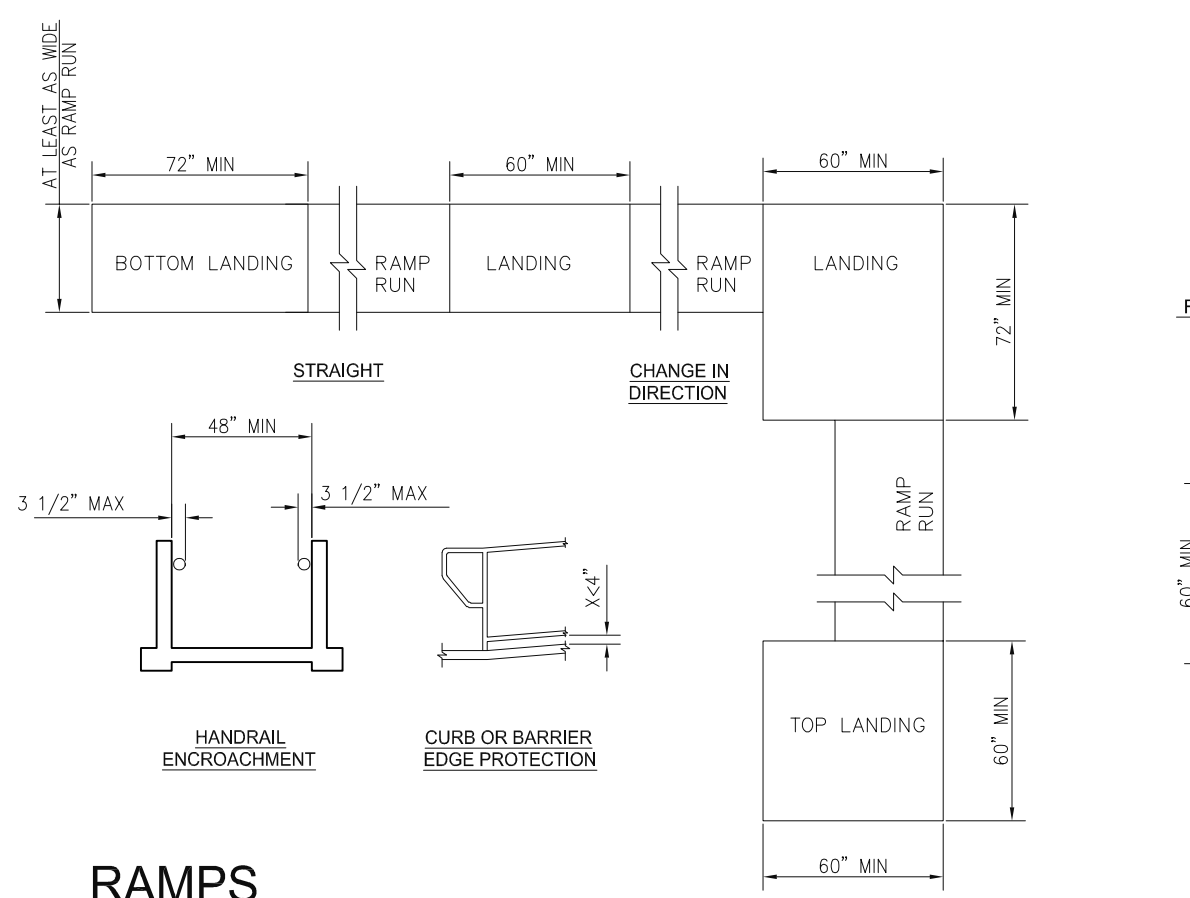


- NOTES:**
- DOORS SHALL BE PERMITTED TO SWING INTO TURNING SPACES.
 - EACH ARM OF THE T-SHAPED SPACE SHALL BE CLEAR OF OBSTRUCTIONS 12 INCHES MINIMUM IN EACH DIRECTION AND THE BASE SHALL BE CLEAR OF OBSTRUCTIONS 24 INCHES MINIMUM. THE SPACE SHALL BE PERMITTED TO INCLUDE KNEE AND TOE CLEARANCE ONLY AT THE END OF EITHER THE BASE OR ONE ARM.
- NOTES:**
- DOORS ARE NOT PERMITTED TO SWING INTO CLEAR FLOOR SPACE, UNLESS OTHERWISE SPECIFIED.
 - FLOOR OR GROUND SURFACES OF A CLEAR FLOOR OR GROUND SPACE SHALL COMPLY WITH FLOOR AND GROUND SURFACES AND CHANGES IN LEVEL ARE NOT PERMITTED.

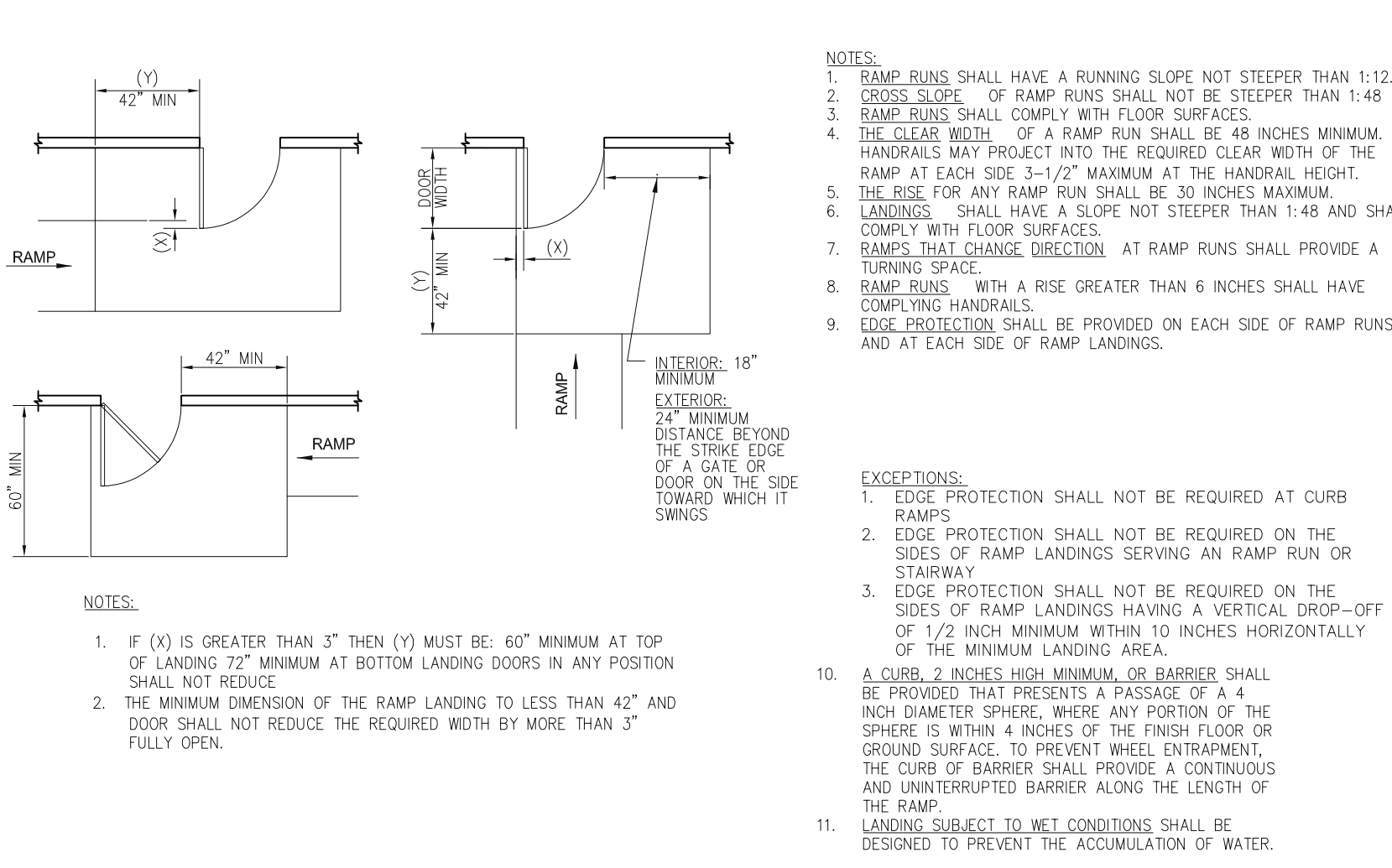


- NOTES:**
- FLOOR SURFACES OF A CLEAR FLOOR SPACE SHALL HAVE A SLOPE NOT STEEPER THAN 1:48 AND SHALL COMPLY WITH FLOOR SURFACES.
 - CLEAR FLOOR SPACE SHALL BE PERMITTED TO INCLUDE KNEE AND TOE CLEARANCE, UNLESS OTHERWISE SPECIFIED.
 - THE CLEAR FLOOR SPACE SHALL BE POSITIONED FOR EITHER FORWARD OR PARALLEL APPROACH TO AN ELEMENT, UNLESS OTHERWISE SPECIFIED.
 - ONE FULL UNOBSTRUCTED SIDE OF THE CLEAR FLOOR SPACE SHALL ADJOIN AN ACCESSIBLE ROUTE OR ADJOIN ANOTHER CLEAR FLOOR SPACE.
 - IF A CLEAR FLOOR SPACE IS SHOWN ALCOVE OR OTHERWISE CONFINED ON ALL OR PART OF THREE SIDES, ADDITIONAL MANEUVERING CLEARANCES COMPLYING WITH MANEUVERING CLEARANCE IN ALCOVE.

CLEAR FLOOR OR GROUND SPACE

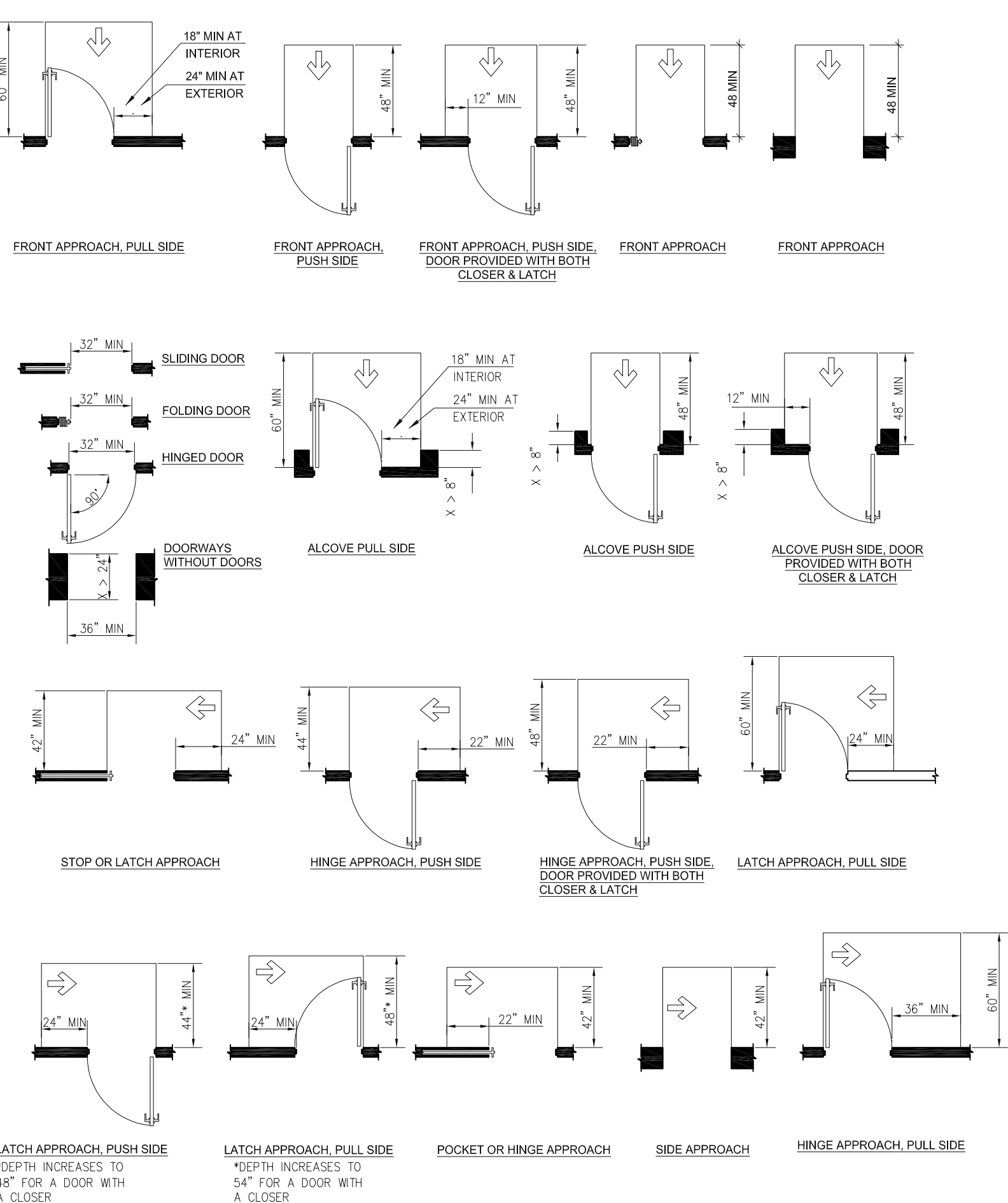
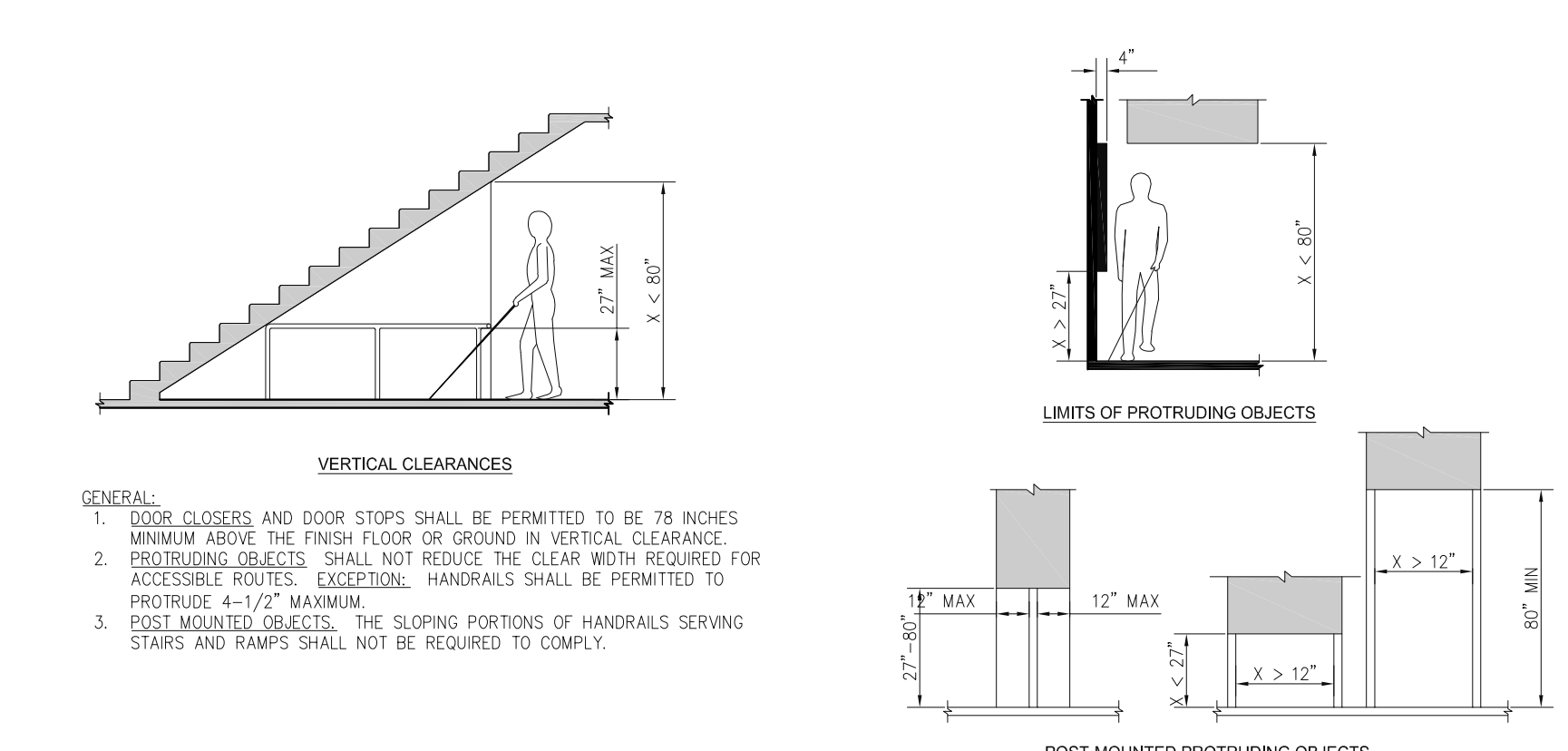


RAMP

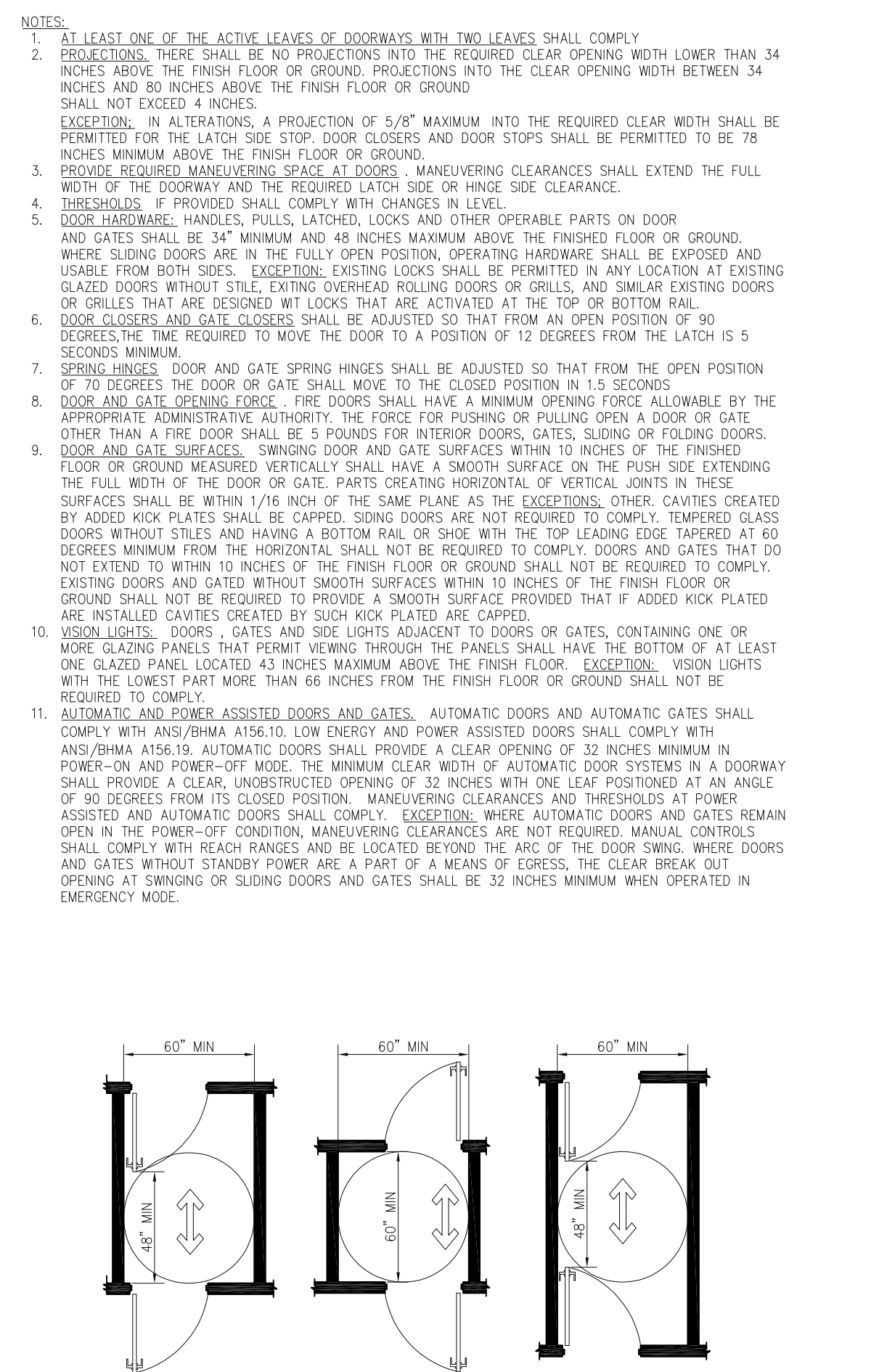


- NOTES:**
- RAMP RUNS SHALL HAVE A RUNNING SLOPE NOT STEEPER THAN 1:12.
 - CROSS SLOPE OF RAMP RUNS SHALL NOT BE STEEPER THAN 1:48.
 - RAMP RUNS SHALL COMPLY WITH FLOOR SURFACES.
 - THE CLEAR WIDTH OF A RAMP RUN SHALL BE 48 INCHES MINIMUM. HANDRAILS MAY PROJEKT INTO THE REQUIRED CLEAR WIDTH OF THE RAMP AT EACH SIDE 3-1/2" MAXIMUM AT THE HANDRAIL HEIGHT.
 - THE RISE FOR ANY RAMP RUN SHALL BE 30 INCHES MAXIMUM.
 - LANDINGS SHALL HAVE A SLOPE NOT STEEPER THAN 1:48 AND SHALL COMPLY WITH FLOOR SURFACES.
 - RAMP RUNS THAT CHANGE DIRECTION AT RAMP RUNS SHALL PROVIDE A TURNING SPACE.
 - RAMP RUNS WITH A RISE GREATER THAN 6 INCHES SHALL HAVE COMPLYING HANDRAILS.
 - EDGE PROTECTION SHALL BE PROVIDED ON EACH SIDE OF RAMP RUNS AND AT EACH SIDE OF RAMP LANDINGS.
- EXCEPTIONS:**
- EDGE PROTECTION SHALL NOT BE REQUIRED AT CURB RAMP.
 - EDGE PROTECTION SHALL NOT BE REQUIRED ON THE SIDES OF RAMP LANDINGS SERVING AN RAMP RUN OR STAIRWAY.
 - EDGE PROTECTION SHALL NOT BE REQUIRED ON THE SIDES OF RAMP LANDINGS HAVING A VERTICAL DROP-OFF OF 1/2 INCH MINIMUM WITHIN 10 INCHES HORIZONTALLY OF THE MINIMUM LANDING AREA.
 - A CURB, 2 INCHES HIGH MINIMUM, OR BARRIER SHALL BE PROVIDED THAT PRESENTS A PASSAGE OF A 4 INCH DIAMETER SPHERE, WHERE ANY PORTION OF THE SPHERE IS WITHIN 4 INCHES OF THE FINISH FLOOR OR GROUND SURFACE, TO PREVENT WHEEL ENTRAPMENT. THE CURB OR BARRIER SHALL PROVIDE A CONTINUOUS AND UNINTERRUPTED BARRIER ALONG THE LENGTH OF THE RAMP.
 - LANDING SUBJECT TO WET CONDITIONS SHALL BE DESIGNED TO PREVENT THE ACCUMULATION OF WATER.

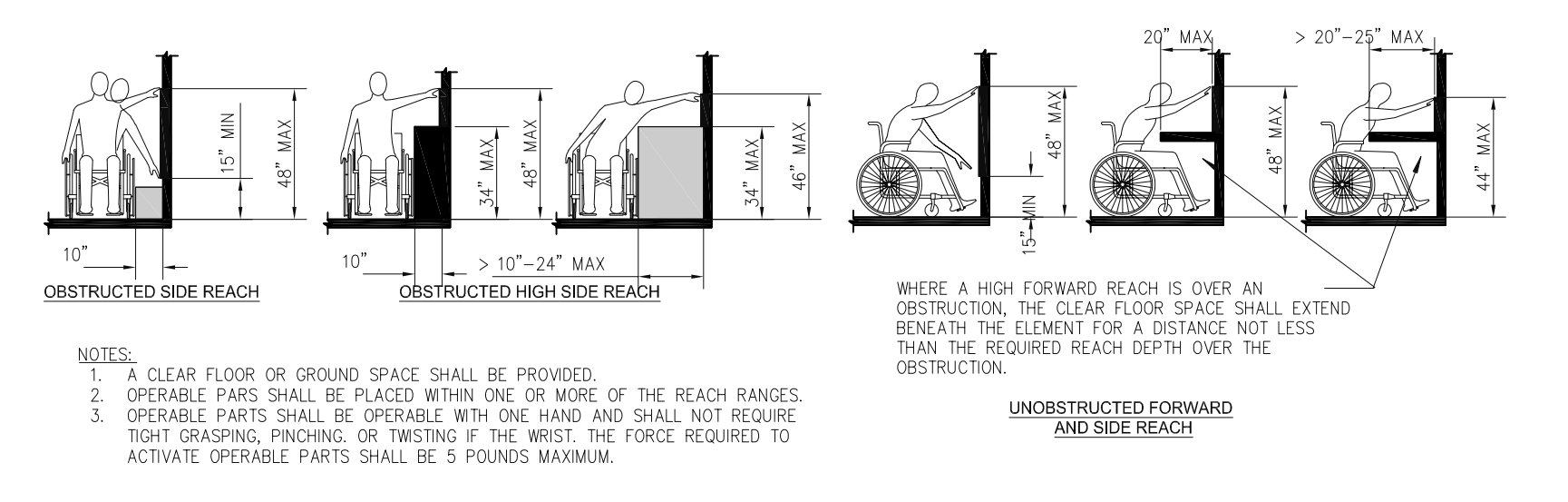
PROTRUDING OBJECTS AND VERTICAL CLEARANCES



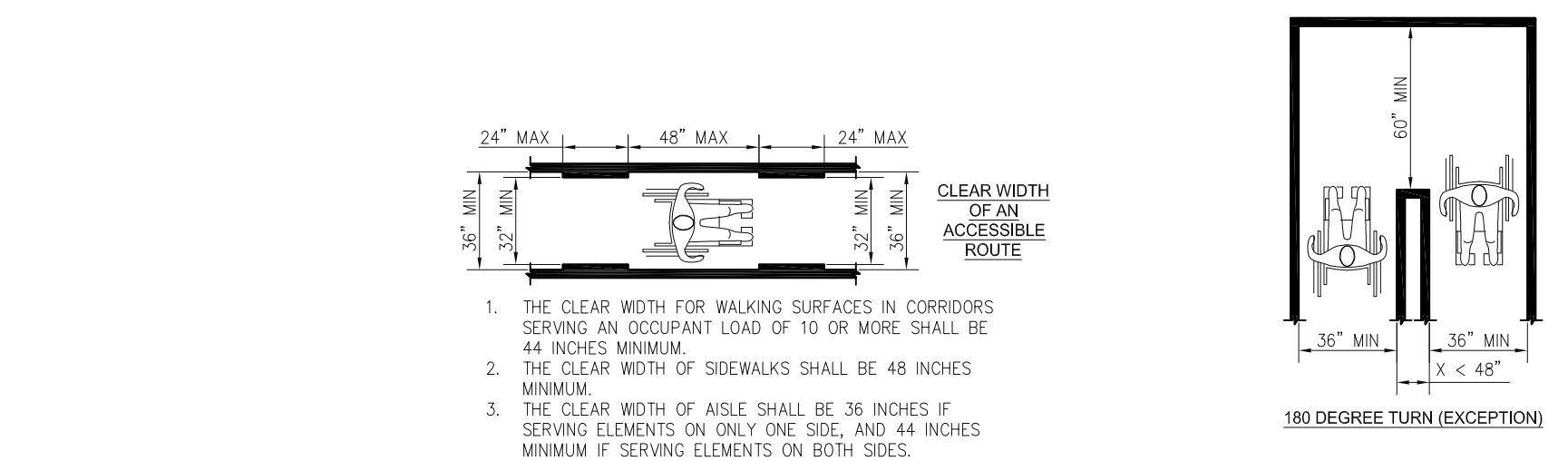
DOORS, DOORWAYS, AND GATES



REACH RANGES



- NOTES:**
- A CLEAR FLOOR OR GROUND SPACE SHALL BE PROVIDED.
 - OPERABLE PARTS SHALL BE PLACED WITHIN ONE OR MORE OF THE REACH RANGES.
 - OPERABLE PARTS SHALL BE OPERABLE WITH ONE HAND AND SHALL NOT REQUIRE TIGHT GRASPING, PINCHING, OR TWISTING OF THE WRIST. THE FORCE REQUIRED TO ACTIVATE OPERABLE PARTS SHALL BE 5 POUNDS MAXIMUM.
- EXCEPTIONS:**
- EXTERIOR GROUND FLOOR EXITS SERVING SMOKE-PROOF ENCLOSURES, STAIRWELLS, AND EXIT DOORS SERVING STAIRS ONLY SHALL NOT BE REQUIRED TO BE ON AN ACCESSIBLE ROUTE.
 - EXITS IN EXCESS OF THOSE REQUIRED BY CHAPTER 10, AND WHICH ARE MORE THAN 24 INCHES ABOVE GRADE SHALL NOT BE REQUIRED TO BE ON AN ACCESSIBLE ROUTE. SUCH DOORS SHALL HAVE WARNING SIGNS STATING THAT THEY ARE NOT ACCESSIBLE.
- ACCESSIBLE ROUTES SHALL CONSIST OF ONE OR MORE OF THE FOLLOWING:**
- WALKING SURFACES WITH A SLOPE NOT STEEPER THAN 1:20, DOORS AND DOORWAYS, RAMPS, CURB RAMPS EXCLUDING THE FLARED SIDES, ELEVATORS, AND PLATFORM LIFTS.
 - REVOLVING DOORS, REVOLVING GATES AND TURNSTILES SHALL NOT BE PART OF AN ACCESSIBLE ROUTE.
 - ACCESSIBLE ROUTES SHALL COMPLY WITH FLOOR AND GROUND SURFACES AND CHANGES IN LEVEL.
 - THE RUNNING SLOPE OF WALKING SURFACES SHALL NOT BE STEEPER THAN 1:20. THE CROSS SLOPE OF A WALKING SURFACE SHALL NOT BE STEEPER THAN 1:48.
 - AN ACCESSIBLE ROUTE WITH A CLEAR WIDTH LESS THAN 60 INCHES SHALL PROVIDE PASSING SPACES AT INTERVALS OF 200 FEET MAXIMUM. PASSING SPACES SHALL BE EITHER A 60 INCH MINIMUM BY 60 INCH MINIMUM SPACE, OR AN INTERSECTION OF TWO WALKING SURFACES THAT PROVIDE A T-SHAPED TURNING SPACE COMPLYING TURNING SPACE PROVIDED THE BASE AND ARMS OF THE T-SHAPED SPACE EXTEND 48 INCHES MINIMUM BEYOND THE INTERSECTION.
 - EMPLOYEE WORK AREAS, SPACES AND ELEMENTS WITHIN EMPLOYEE WORK AREA SHALL ONLY BE REQUIRED TO COMPLY WITH ACCESSIBLE ROUTES, ACCESSIBLE MEANS OF EGRESS AND AUDIBLE ALARM COVERAGE.
 - MULTILEVEL BUILDINGS: AT LEAST ONE ACCESSIBLE ROUTE SHALL CONNECT EACH ACCESSIBLE LEVEL, INCLUDING MEZZANINES, IN MULTILEVEL BUILDINGS AND FACILITIES.



ACCESSIBLE ROUTES



ADA Circulation Accessibility	
REV. NO. 001	DWG. NO. AGD-03
REV. DATE: 08-27-20	SCALE: NTS
DRAWN BY: NBS	